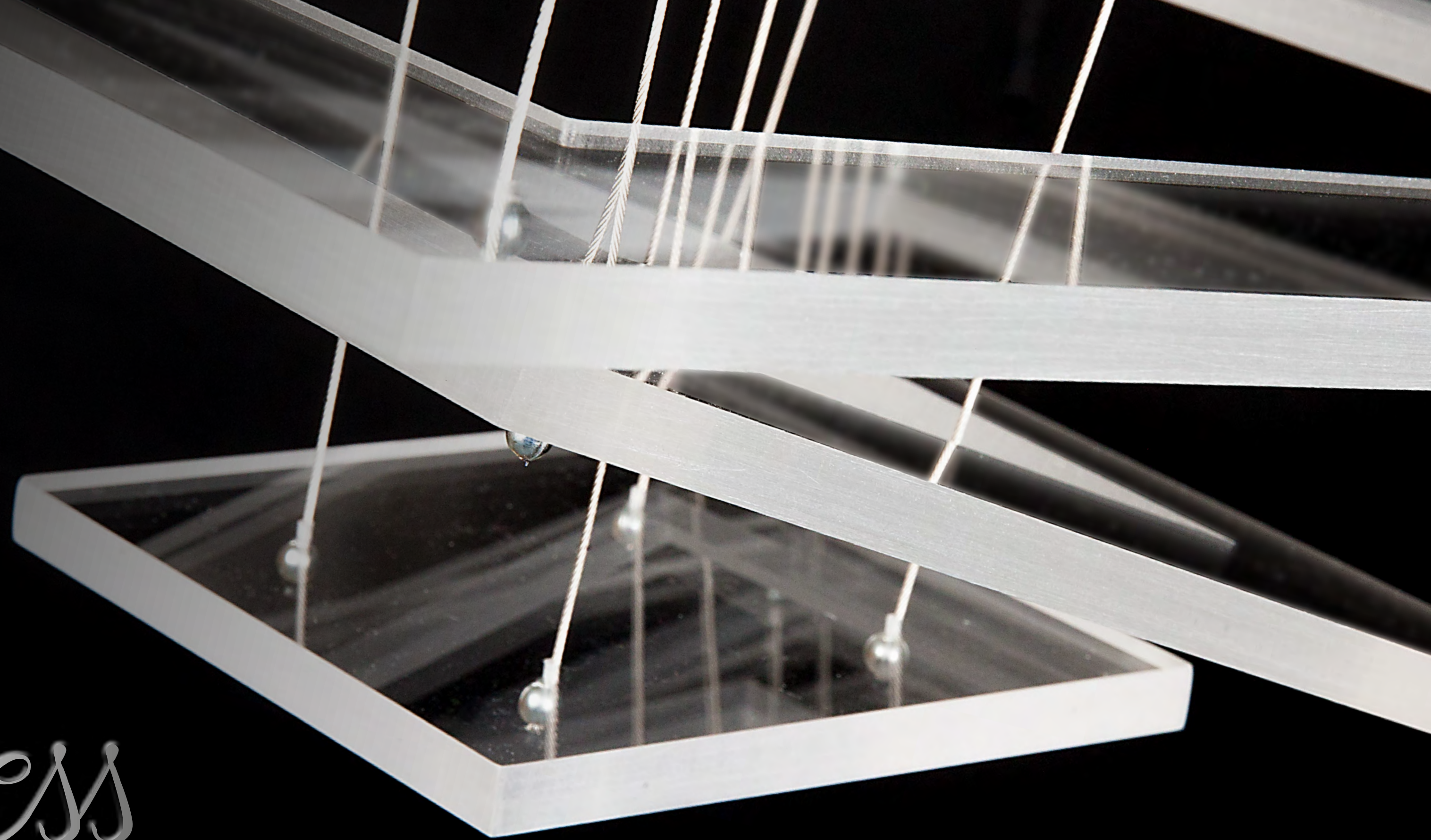




**ARTGLASS**  
CHANDELIERS FROM BOHEMIA

*Pure Coolness*  
FROM GEOMETRY COLLECTION

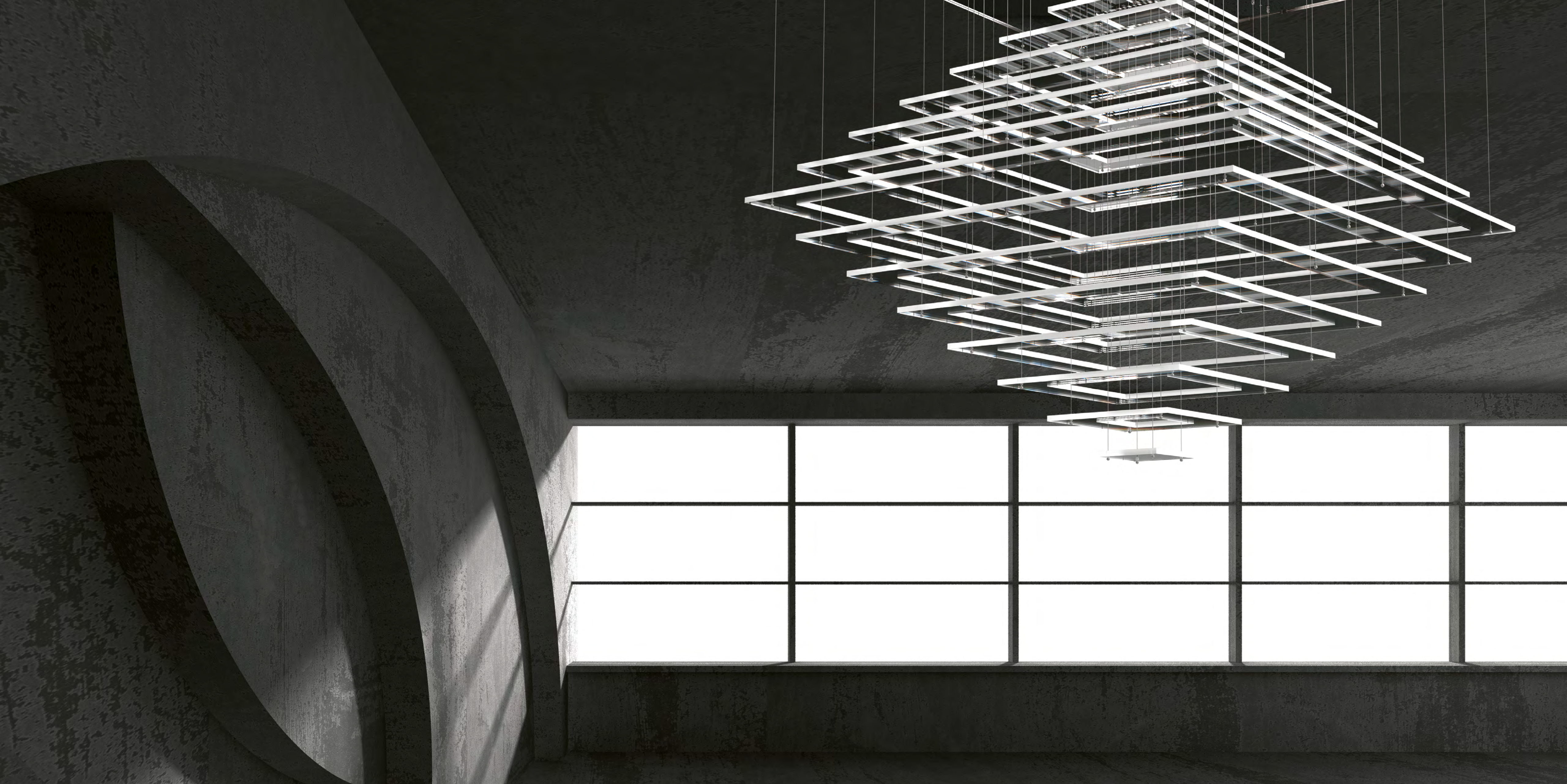


# *Pure Coolness*

The Pure Coolness lighting fixture features geometric shapes made of sheets of material (plexiglass and polycarbonate), in combination with cool metal lit by LED chips. The geometric spiral created by the layers of suspended flat sheets creates the illusion of movement.

DESIGNED BY PETRA VONDRÁČKOVÁ





PURE COOLNESS

PURE COOLNESS 05 – CH | 1000x1000x1000 | 25x1W LED



[WWW.ARTGLASS.CZ](http://WWW.ARTGLASS.CZ)



PURE COOLNESS PURE COOLNESS 01 – CH | 1000x550x1000 | 25x1W LED



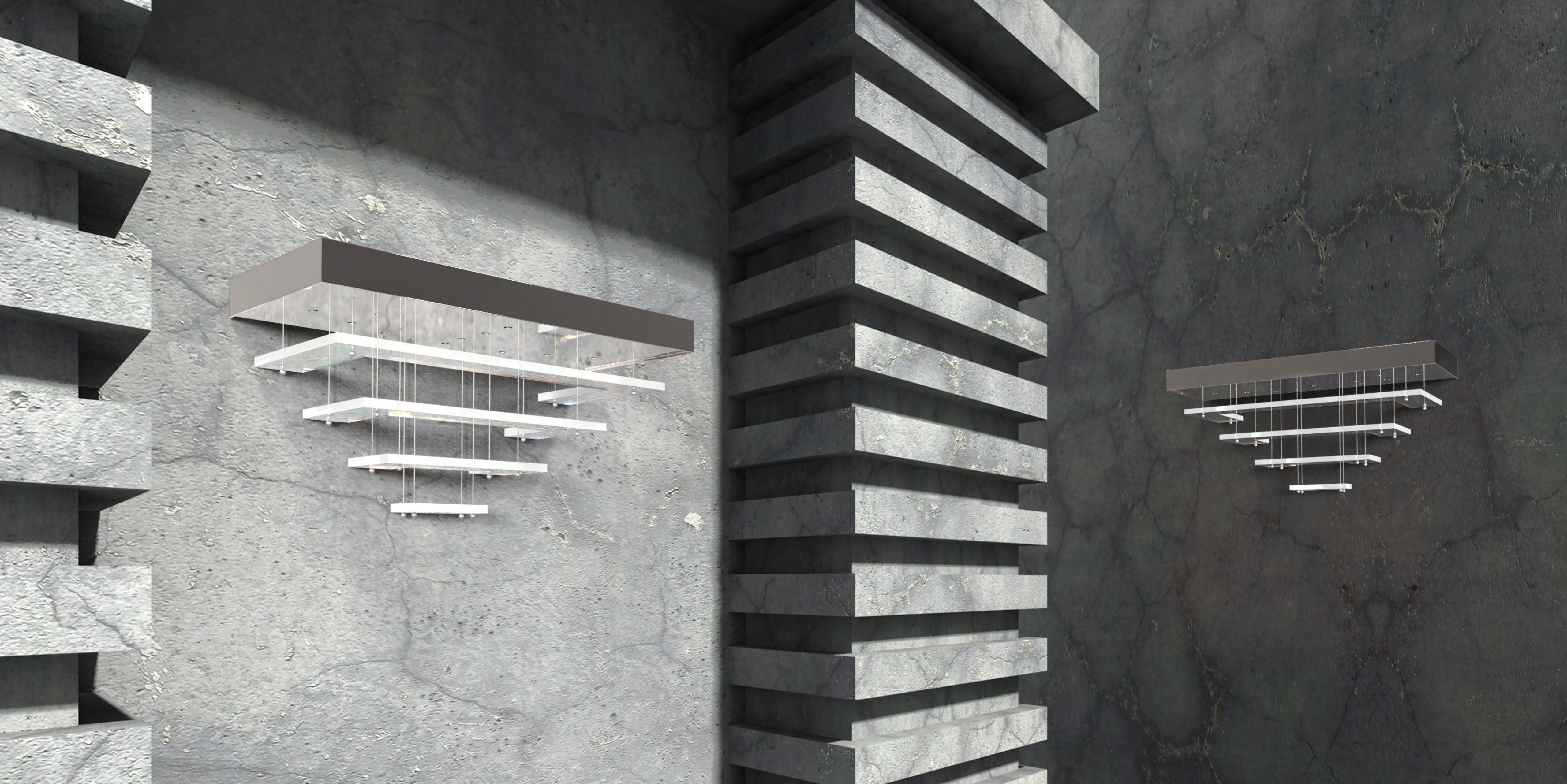
WWW.ARTGLASS.CZ



PURE COOLNESS 3x PURE COOLNESS 01 – CH | 1000x550x1000 | 25x1W LED



WWW.ARTGLASS.CZ

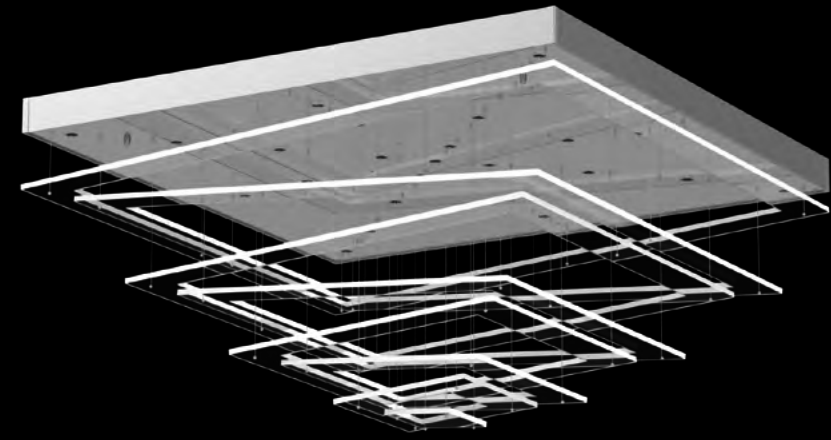


PURE COOLNESS 2x PURE COOLNESS 02 – WL | 450x250x220 | 10x1W LED

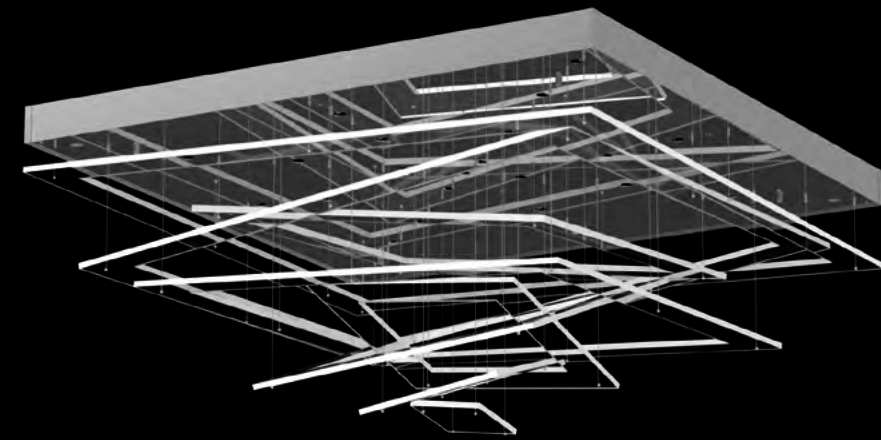


WWW.ARTGLASS.CZ

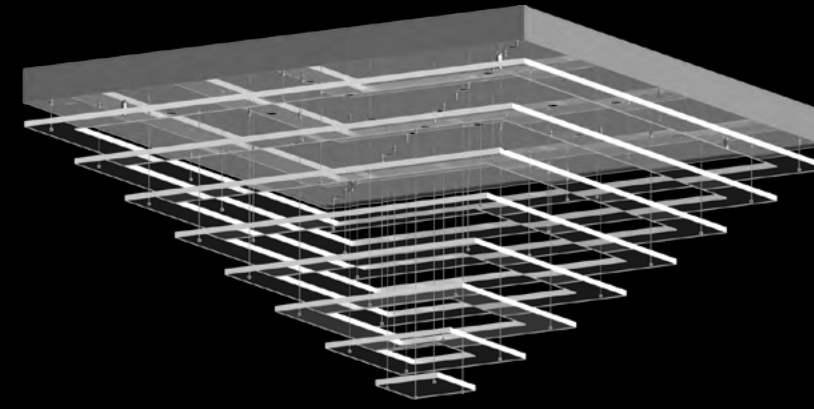
## CHANDELIERS



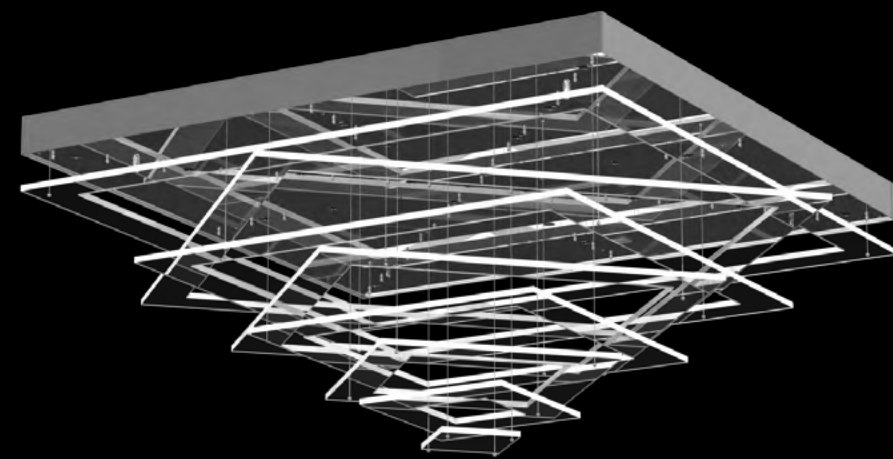
PURE COOLNESS 01 – CH  
1000x550x1000 | 25x1W LED



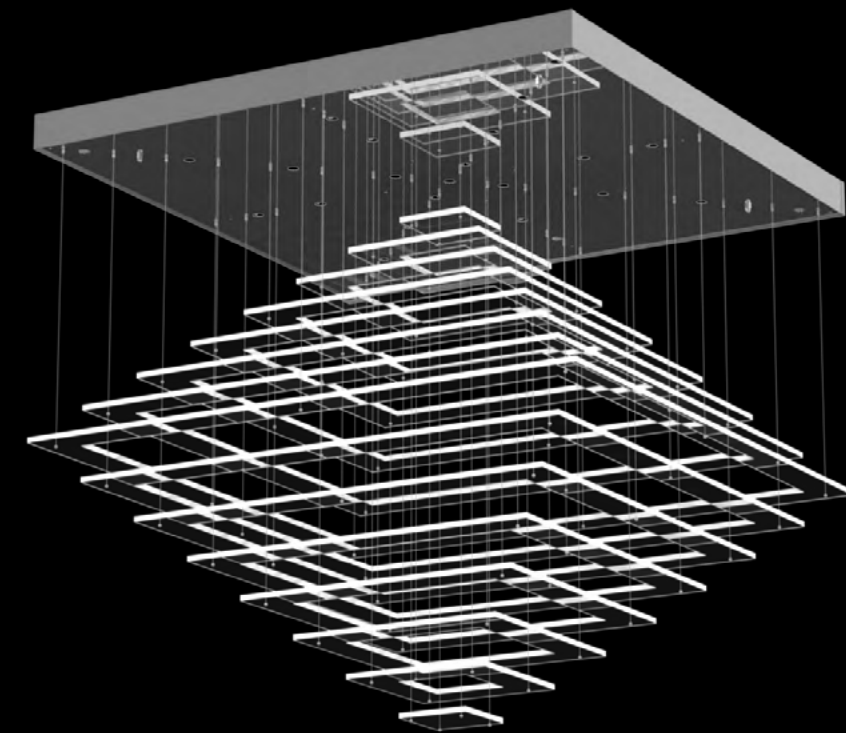
PURE COOLNESS 02 – CH  
1000x500x1000 | 25x1W LED



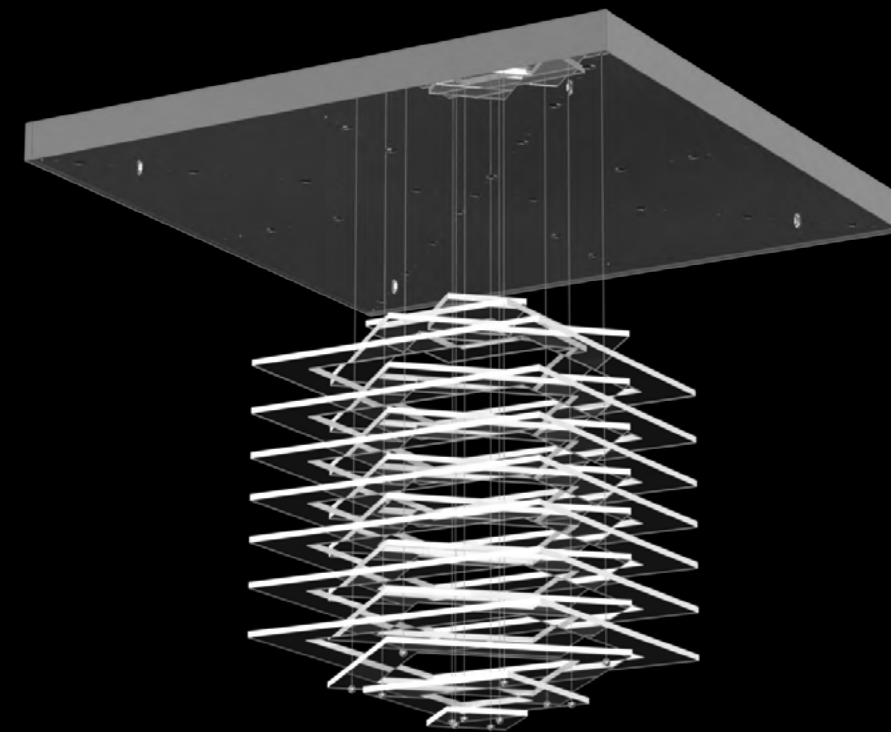
PURE COOLNESS 03 – CH  
1000x550x1000 | 25x1W LED



PURE COOLNESS 04 – CH  
1000x500x1000 | 25x1W LED

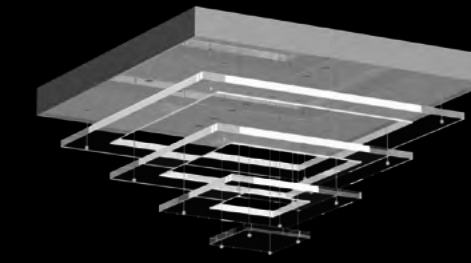


PURE COOLNESS 05 – CH  
1000x1000x1000 | 25x1W LED

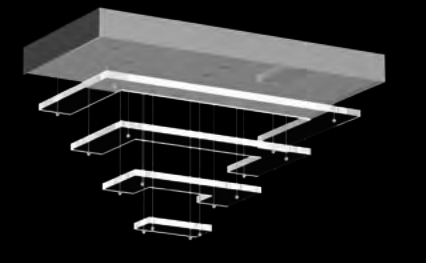


PURE COOLNESS 06 – CH  
1000x900x1000 | 25x1W LED

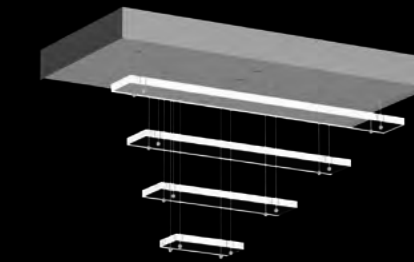
## WALL LAMPS



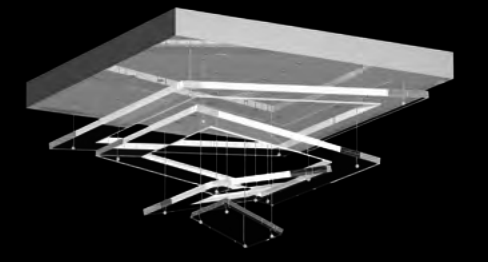
PURE COOLNESS 01 – WL  
450x250x450 | 16x1W LED



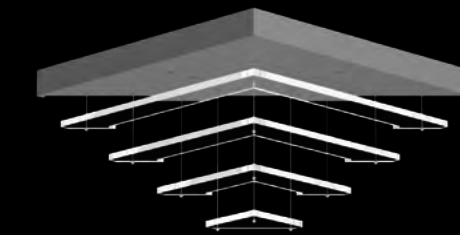
PURE COOLNESS 02 – WL  
450x250x220 | 10x1W LED



PURE COOLNESS 03 – WL  
450x250x220 | 8x1W LED



PURE COOLNESS 04 – WL  
450x250x450 | 16x1W LED



PURE COOLNESS 05 – WL  
640x250x330 | 8x1W LED

### NOTE

PURE COOLNESS uses plexiglass, which is perfectly illuminated from the light fitting base.

Lighting fixtures are shown here for the purposes of illustration only and the designs can be tailored depending on the client's requirements and technical feasibility. Likewise, the full range of surface finishes and colour designs may be more extensive than those shown.





ARTGLASS s.r.o., Smetanova 1659/42, 466 01 Jablonec nad Nisou  
sales@artglass.cz, +420 483 369 111, +420 483 369 113  
CZECH REPUBLIC

[www.artglass.cz](http://www.artglass.cz)